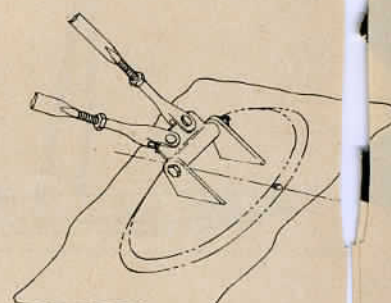
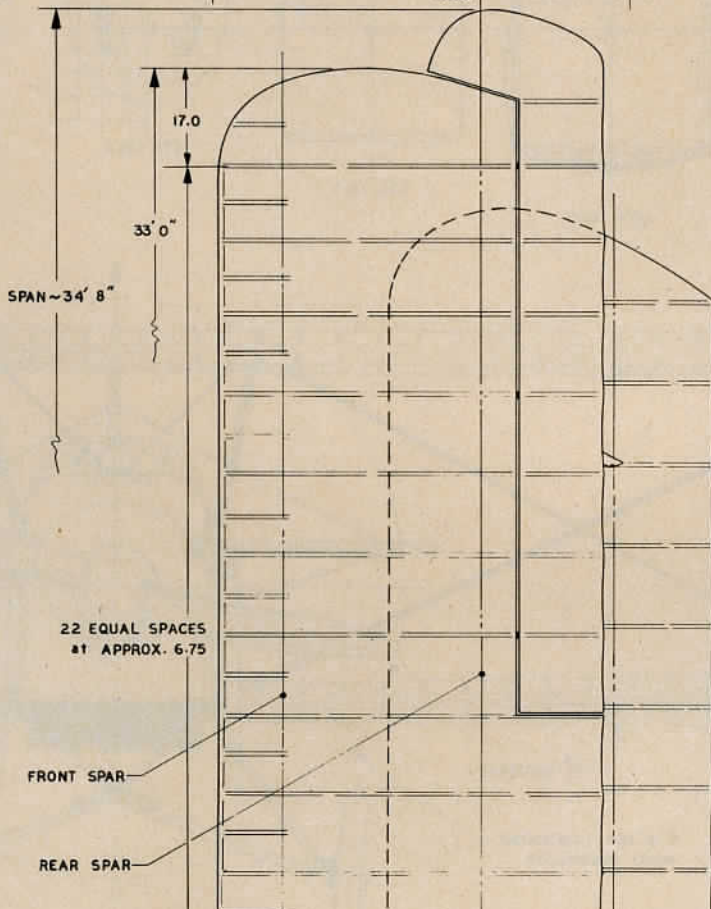
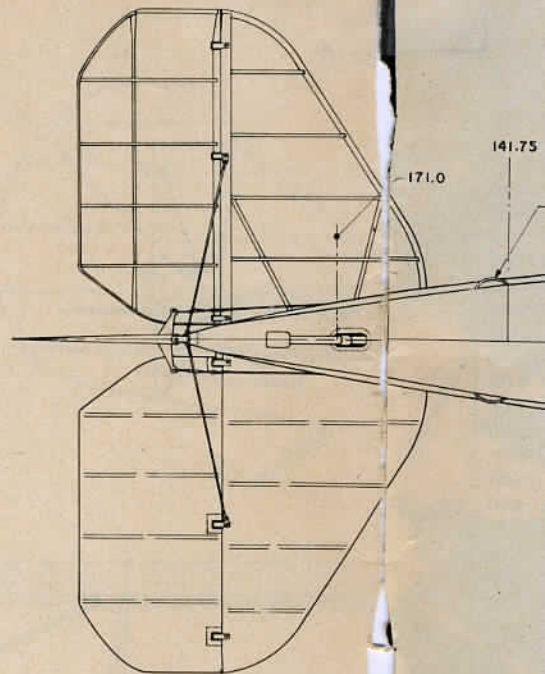
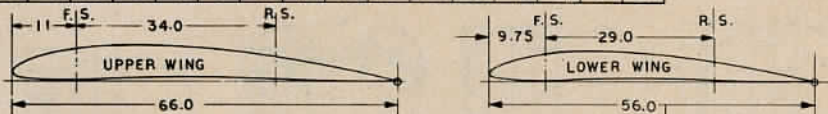


T. A. No. 1 AIRFOIL - 0° INCIDENCE. (MEASURED VALUES)

UPPER WING ~ 66 IN. CHORD															
7%	L.E.	2.5	5	7.5	10	15	20	30	40	50	60	70	80	90	100
UPR	1.32	2.97	3.65	4.16	4.49	5.15	5.48	5.74	5.74	5.41	4.75	3.89	2.77	1.45	0
LWR	1.32	.53	.20	.13	0	.20	.26	.46	.60	.60	.46	.26	.13	0	0

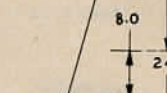
LOWER WING ~ 56 IN. CHORD															
7%	L.E.	2.5	5	7.5	10	15	20	30	40	50	60	70	80	90	100
UPR	1.12	2.52	3.08	3.53	3.81	4.37	4.65	4.87	4.87	4.59	4.03	3.30	2.35	1.23	0
LWR	1.12	.45	.17	.12	0	.17	.22	.39	.50	.50	.39	.22	.12	0	0

Ken Stoltzfus Collection
www.john2031.com



DETAIL OF TYPICAL
EGGSHELL FAIRING OVER
WIRE END ATTACH.

NOTE THAT CYLINDER BANKS
ARE STAGGERED 2 INS.



CENTER SECTION
CHORD ~ 4' 6"

9 EQUALLY
SPACED STRINGERS

EGGSHELL FAIRINGS
OVER WIRE FITGS.
(SEE DETAIL)

-45.5 -39.0

-14.5

83.5

112.63

141.75

GROUND ADJUS
FIN

STA. 0

NON SKID WING WALKWAY
OVER PLYWOOD COVERING

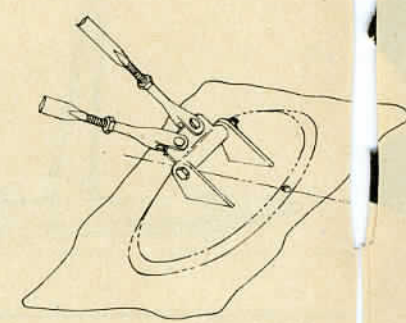
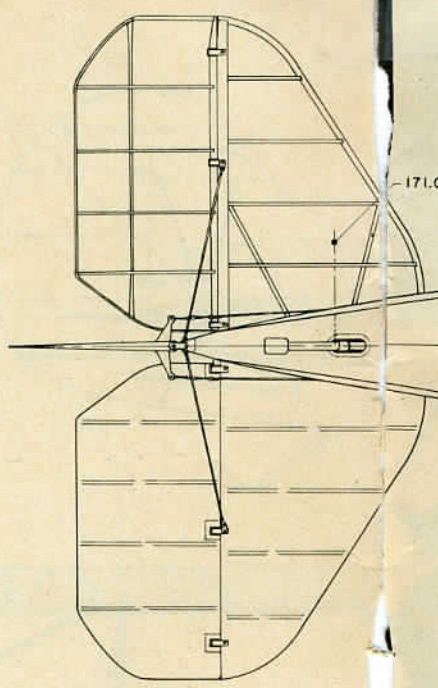
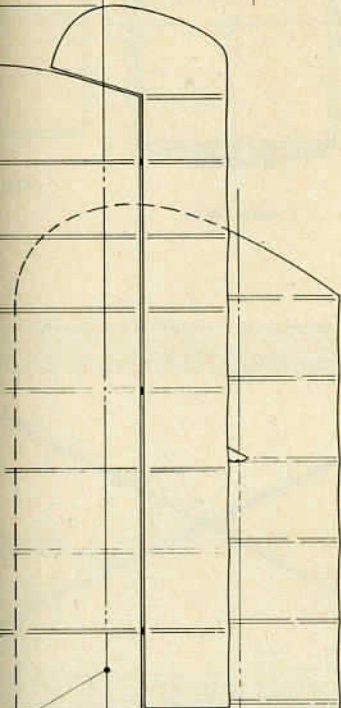
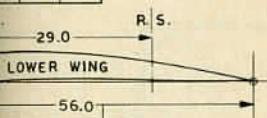
STAGGER ~ 29"

26.5

55.5

TOP VIEW

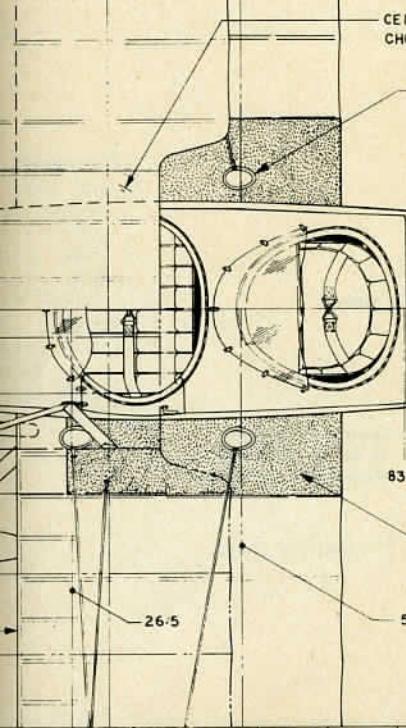
0	90	100
77	1.45	0
13	0	0
35	1.23	0
12	0	0



CENTER SECTION
CHORD ~ 4' 6"

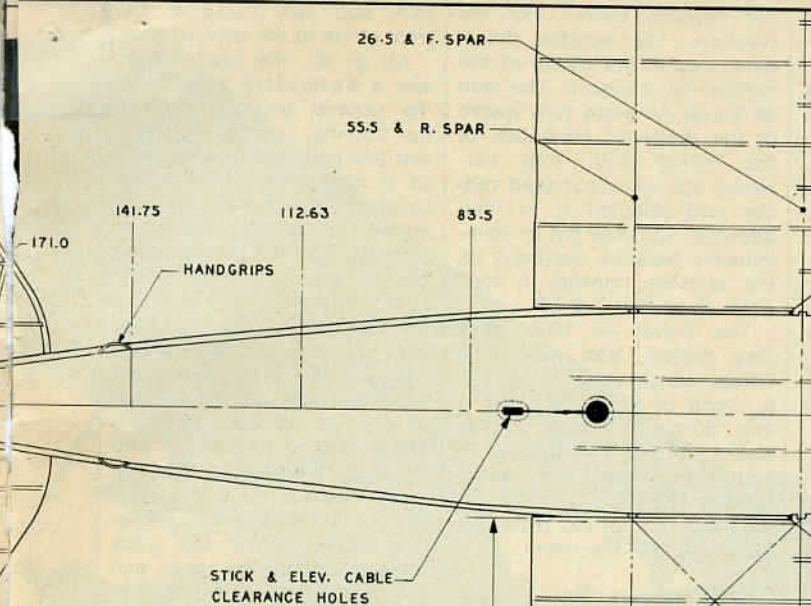
9 EQUALLY
SPACED STRINGERS

EGGSHELL FAIRINGS
OVER WIRE FITGS.
(SEE DETAIL)



NON SKID WING WALKWAY
OVER PLYWOOD COVERING

TOP VIEW

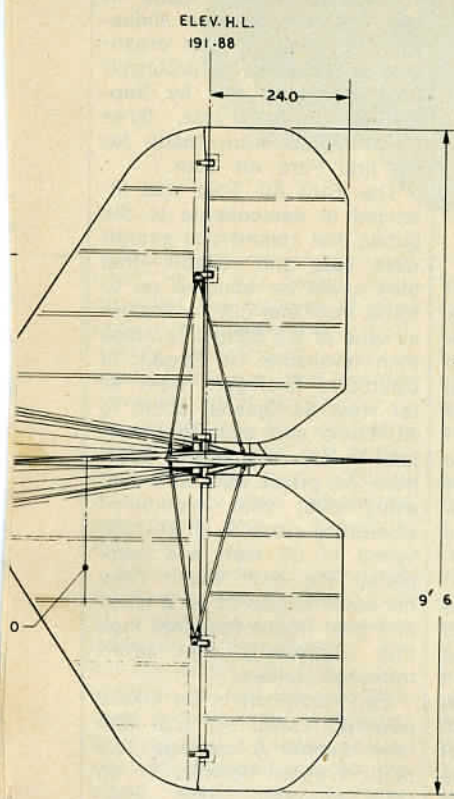


STICK & ELEV. CABLE
CLEARANCE HOLES

BOTTOM VIEW

20 EQUAL SPACES
@ APPROX. 7.00

AILERON PUSHROD
(SEE DETAIL)



R. SPAR

F. SPAR

GROUND ADJUS
FIN

WAS DESIGNED BY
FIRST WELDED STEEL
IN THE U.S.A. ONE
1,000 WERE MANUF
ALUMINUM WINGS. SOM
NC-4958, NC-5290, C-

